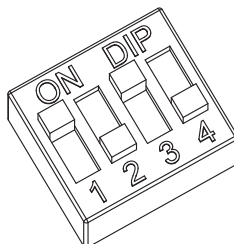


DESCRIPTION

Once the connections are made as in the drawing, the control unit is already operational via wire with the pre-set functions and default settings.

DEFAULT DIP-SWITCHES POSITION

To have the default functioning the dip must be set to ON, OFF, ON, OFF

**USE VIA WIRE**

The function of the key is pre-set.

Button 1 = On Off load 1

Button 2 = On Off load 2

DEFAULT PARAMETERS

The control unit has pre-set parameters for standard operation.

- functioning mode: bistable (On/Off)
- timer: none
- type of connected device: button

These settings can be customised, see the full manual.

USE VIA RADIO

To be able to use a transmitter an association must first be made, see procedure on the back

RADIO PROGRAMMING

This procedure lets you programme compatible multifunctional or generic transmitters.

WHICH REMOTE CONTROL DO YOU WANT TO ASSOCIATE WITH THE CONTROL UNIT?

MULTIFUNCTIONAL TRANSMITTERS

CODES:

HB70-SLCT, HB70-SPCT,
HB80-1C, HB80-1DIM, HB80-2L, HB80-30D, HB80-30RGBW, HB80-4C, HB80-4DIM, HB80-4L,
HB90-6LT,
ROUND-1SP,
SENSA-M, SENSA-P, SENSA-R35M, SENSA-R35P, SENSA-R35T, SENSA-T,
TOUCH-1, TOUCH-1CCT, TOUCH-1DIM, TOUCH-1SP, TOUCH-1L , TOUCH-1RGBW, TOUCH-3C, TOUCH-4DIM, TOUCH-CFU

With multifunctional transmitters the transmitter control modes depend on the model used.
Refer to the transmitter manual, to the paragraph entitled "commands sent by the transmitter",
bearing in mind that:
Output set as bistable (DIP 1=ON, DIP 2= OFF, DIP3= ON, DIP4= OFF): on/off device

GENERIC TRANSMITTERS (WIRELESS BUS)

CODES:

HB80-6G,
MCU-TX4,
TOUCH-1G, TOUCH-2G, TOUCH-4G, TOUCH-LOCK4, TOUCH-TX2,
ROUND-1G

With generic transmitters, the transmitter's control modes depend on the function associated with the key during the association procedure.

The available function for the key are:

TABLE 5.1A
KEY FUNCTIONS OF THE
GENERIC TRANSMITTER
FOR LOAD 1

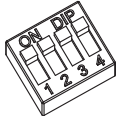

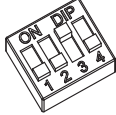

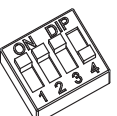

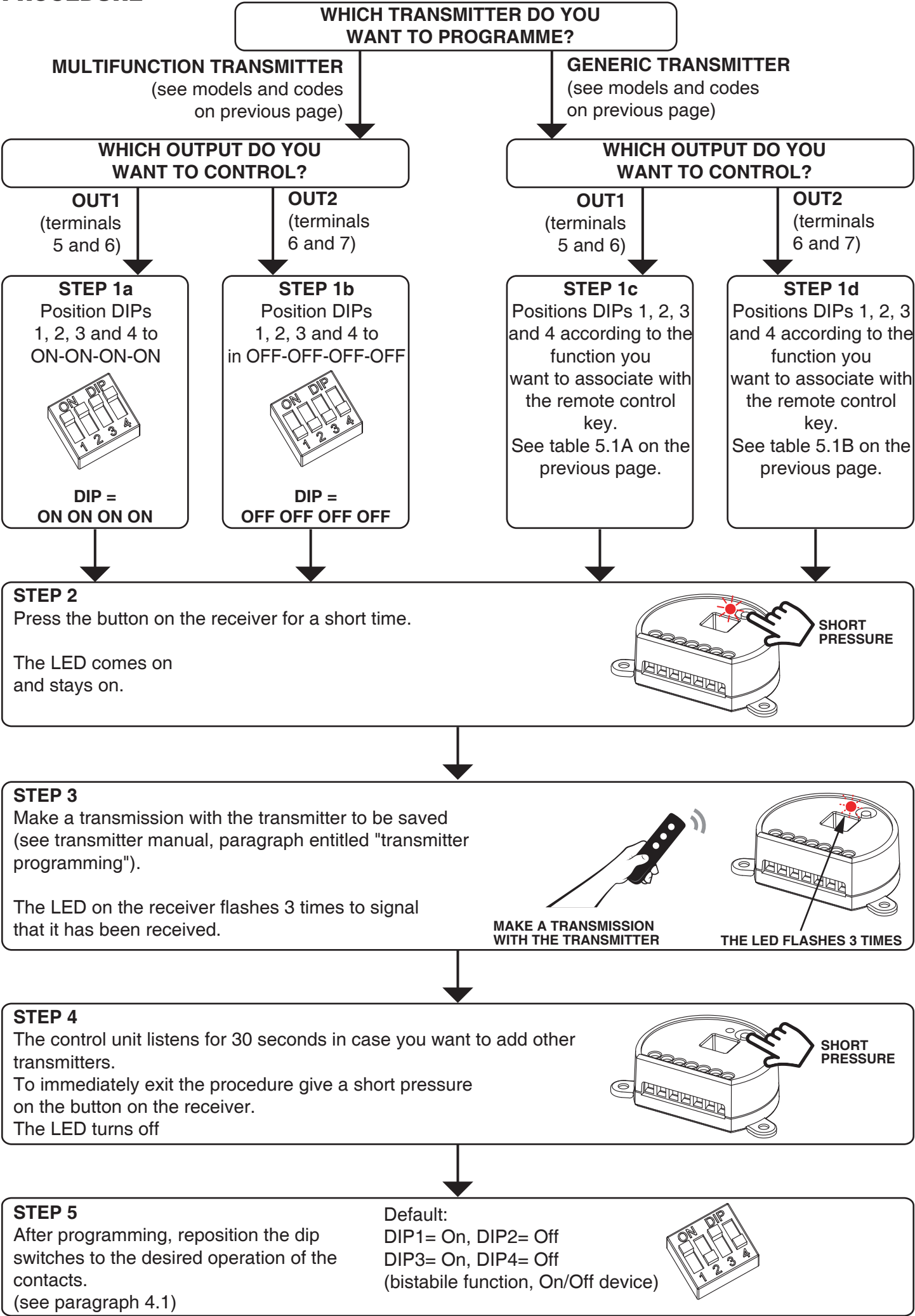
POSITION OF DIP IN "STEP 1C" OF THE PROCEDURE	KEY FUNCTION
 DIP : ON ON ON ON	ON/OFF OUT1
 DIP : OFF OFF OFF ON	ON OUT1
 DIP : OFF OFF ON OFF	OFF OUT1

TABLE 5.1B
KEY FUNCTIONS OF THE
GENERIC TRANSMITTER
FOR LOAD 2

POSITION OF DIP IN "STEP 1D" OF THE PROCEDURE	KEY FUNCTION
 DIP : OFF OFF OFF OFF	ON/OFF OUT2
 DIP : ON ON ON OFF	ON OUT2
 DIP : ON ON OFF OFF	OFF OUT2

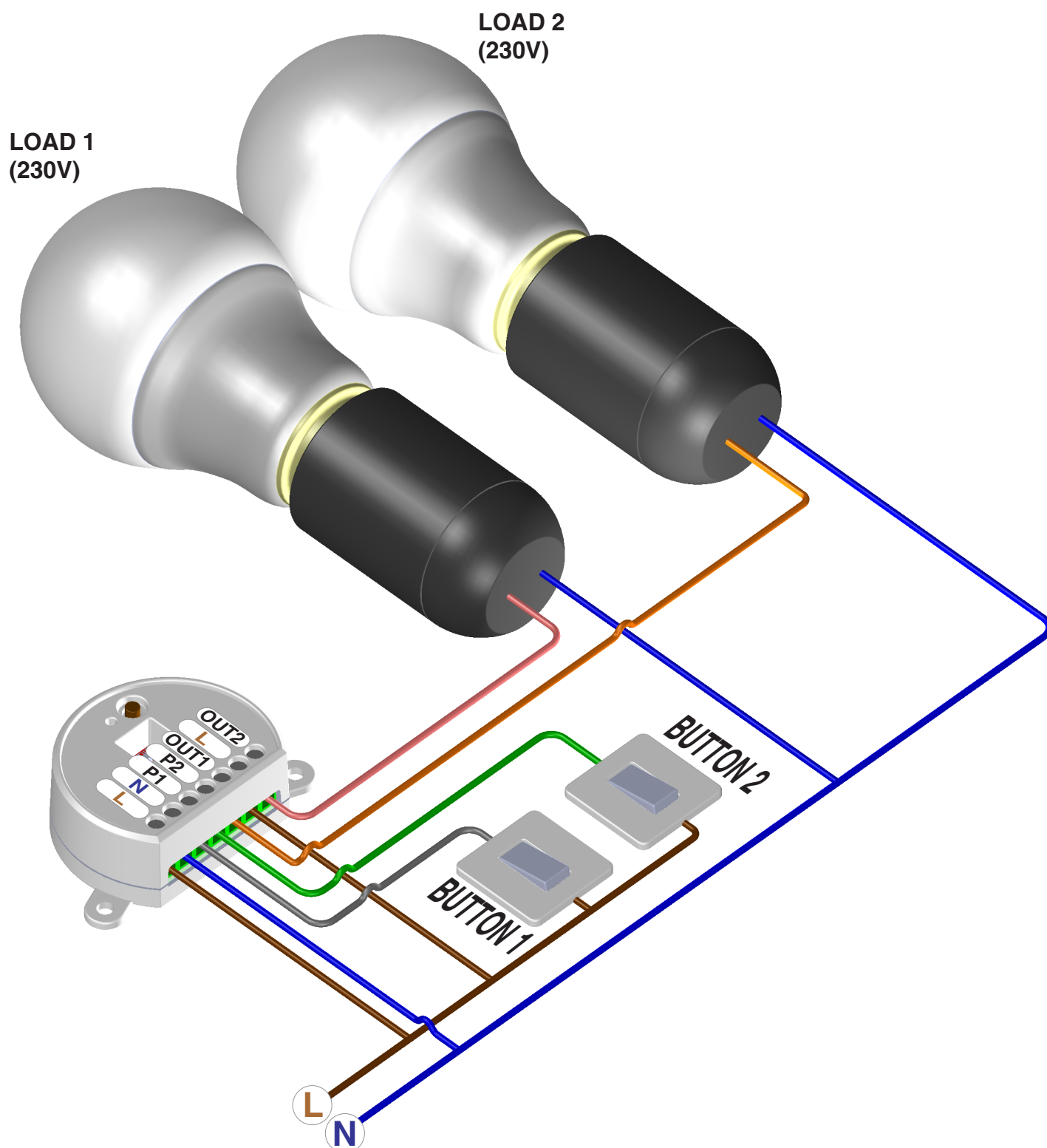
PROCEDURE



Quick start MCU-L2

*Control unit for two
230V load*

CONNECTION DIAGRAM



ATTENTION:

See the full manual for the restrictions on use
and full features of the control unit